

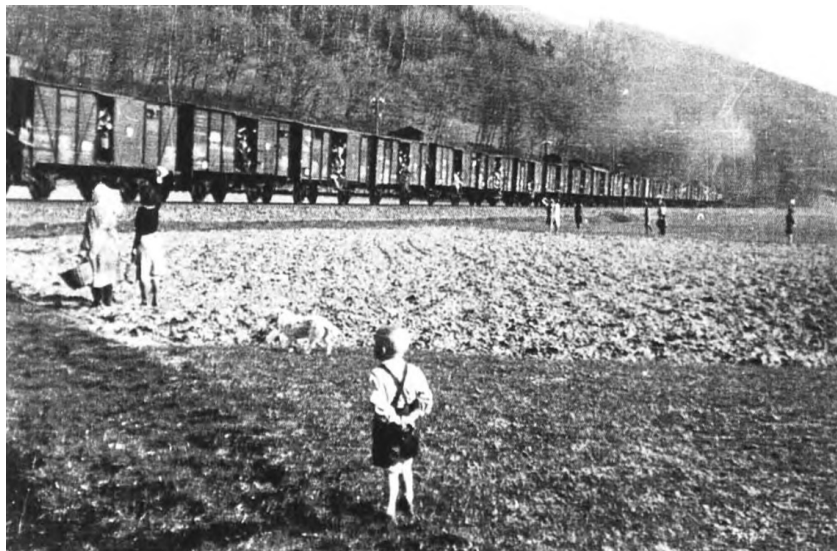
Forced migration, staying minorities, and new societies: Evidence from post-war Czechoslovakia

Jakub Grossmann¹ Štěpán Jurajda¹ Felix Roesel²

¹CERGE-EI ²ifo, CESifo,
Prague TU Dresden

Sudetenland, May 2026

Post-war ethnic cleansing: 20 million go, but few stay



Source: <https://www.kuhlaendchen.de>, *Sudetenland* city of Odry (Odrau).

In a nutshell

- Cross-border displacement is at new record highs today (20 million)
- Little is known about the few who escape displacement and stay
- Natural experiment in post-WWII *Sudetenland* (Czechoslovakia)
- Hotspots of staying **anti-fascist Germans** have long-run footprints
- German roots of 6–10% of the 2017 Czech Communist vote

Contributions

- **Staying minority influence new societies after ethnic cleansing**

Forced migrants (Bauer et al., 2013; Becker and Ferrara, 2019; Becker et al., 2020), slave trade (Nunn, 2008; Nunn and Wantchekon, 2011), expulsions of Jews from Nazi Germany (Waldinger, 2010, 2012; Akbulut-Yuksel and Yuksel, 2015; Huber et al., 2020), ethnic cleansing (Acemoglu et al., 2011; Arbatli and Gomtsyan, 2019; Charnysh, 2019)

- **Political identity supplants ethnic identity across generations/regimes**

Homogenization, assimilation, identity changes (Grosfeld and Zhuravskaya, 2015; Dehdari and Gehring, 2018; Fouka, 2019; Gennaioli and Tabellini, 2019; Fouka et al., 2021)

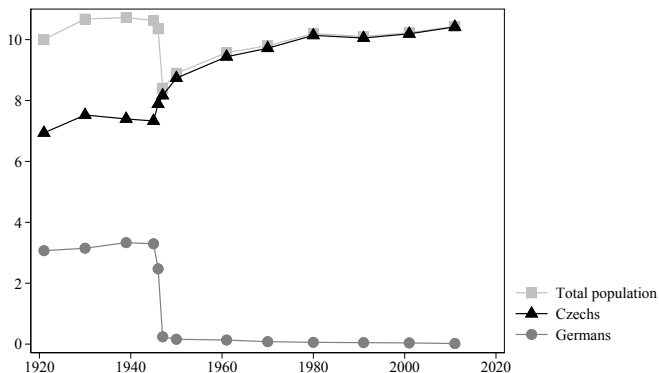
- **Heterogeneity within post-displacement *Sudetenland***

Differences of *Sudetenland* to Czech main lands (Guzi et al., 2019; Testa, 2020)

- **Far-left extremism has historical place-based roots**

Far-right extremism (Voigtländer and Voth, 2012; Cantoni et al., 2020; Ochsner and Roesel, 2020), Far-left extremism (Fontana et al., 2017)

Population in the Czech lands



Notes: The figure shows total population of the Czech Republic (Czech lands consisting of Bohemia, Moravia and Silesia) between 1921 and 2011 (light gray), and population by self-declared ethnicity (black and dark gray). The German population (dark gray bullets) was almost entirely expelled in 1945 and 1946 and partly replaced by residents mainly from Czech hinterlands and Slovakia. ‘Czechs’ refers to all other non-German residents (black triangles).

Czechoslovakia expelled 3 million Germans after WWII ...



Early/"Wild expulsions" (1945)
800,000



Regular transfers (1946)
2,200,000

Source: <https://www.pametnaroda.cz>, Left: Rýmařov (Römerstadt) 1945. Right: Odry (Odrau) 1946.

... but 200,000 German workers and anti-fascists stayed



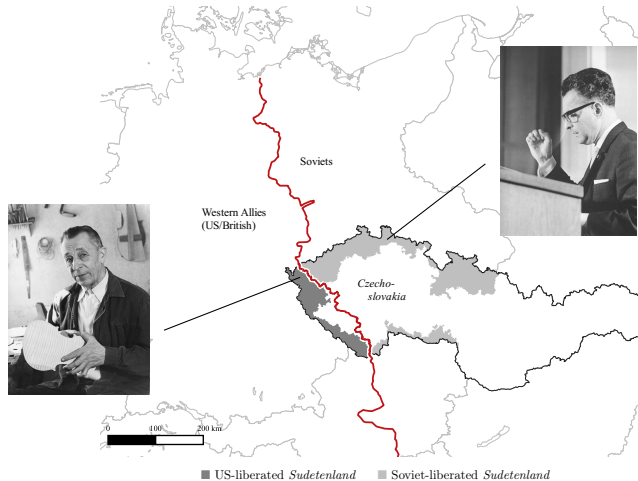
Josef Pötzl—stayed
(Communist MP 1954–60)



Josef Streit—left
(Attorney General, SED-ZK)

Source: <http://www.potzl.cz/>, J. Foitzik (1983): Kadertransfer.

Division of *Sudetenland* in 1945



Notes: The red line is the line of contact where the Western Allies (mainly British and US forces) and the Red Army met in May 1945. The gray lines correspond to national boundaries as of 1930. The gray shaded area in Czechoslovakia represents *Sudetenland*—a region settled by around three million Germans, which was annexed by Nazi Germany in October 1938. The US-liberated part of *Sudetenland* is in dark gray, the Soviet-liberated part in light gray.

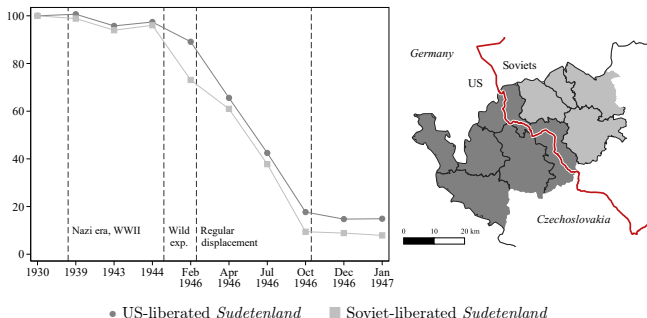
Anti-fascist Germans in Czechoslovakia

Two reasons for local hotspots of staying anti-fascist Germans in US-liberated *Sudetenland*:

- ① Soviets supported “wild expulsions” in 1945 (anti-fascist and Nazi Germans often treated equally) vs. US prevented “wild expulsions”
- ② Soviets supported early displacement of anti-fascists (30,000 already in 1945) vs. US army closed borders until December 1945

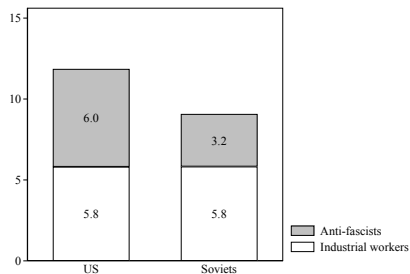
→ First-place local differences in anti-fascist Germans once they became legally entitled to stay (1946)

US army prevented, Soviets boosted German displacement



Notes: The graph on the left compares the share of remaining Germans in % of the 1930 population in the US- and Soviet-liberated counties corresponding to the northern half of the *Sudetenland* demarcation line. The corresponding map on the right shows the primarily US-liberated counties in dark gray, while the Soviet-liberated counties are in light gray. The 1947 counties of Aš, Cheb, Kraslice, Loket, Sokolov, and Vildštejn sum up to the US region, the Soviet region is the sum of the counties of Horní Blatná, Jáchymov, Karlovy Vary and Nejdek. The red line in the map represents the demarcation line between US and Soviet forces between May 1945 and December 1945. The first two dashed vertical lines in the graph bracket the period from the annexation of *Sudetenland* by Nazi Germany in October 1938 to Germany's surrender in May 1945. The second set of vertical lines corresponds to the presence of US forces in Western Czechoslovakia (April/May 1945 to December 1945) and 'wild expulsions' in Soviet liberated *Sudetenland*. The period of organized mass displacement of Germans from *Sudetenland* (February to October 1946) corresponds to the third bracketed period. For sources, see section B.2 in the Online Appendix.

More anti-fascist Germans after regular transfers



Notes: The figure shows how the remaining German population in neighboring US- and Soviet-liberated regions of *Sudetenland* after the end of organized mass transports in late 1946 (in % of 1930 population) breaks down into different legal entitlements. Data were hand collected from local archives in Karlovy Vary and Sokolov. The sample consists of 76 municipalities (US: 22, Soviets: 54) in the counties of Karlovy Vary, Kraslice and Loket. Industrial workers also include the few Germans exempt from displacement based on Jewish origin, high age, and mixed marriage. The anti-fascist group includes certified anti-fascists and Germans subject to potential future deportation, who are likely to be anti-fascists as of late 1946).

Identification

- Election data at the level of (small) Czech municipalities
- Hand-collected data from historical sources (e.g., local and national archives, German and Czech administrative data, hardcover copies)
- Spatial RD, cut-off: US-Soviet demarcation line in 1945

$$\begin{aligned} Communist_i = & \alpha + \beta_1 US_i + \beta_2 Distance_i + \beta_3 Distance_i^2 + \\ & \beta_3 Distance_i \times US_i + \beta_4 Distance_i^2 \times US_i + X_i' \gamma + \epsilon_i \end{aligned} \quad (1)$$

with $Communist_i$: Communist vote share in Czech municipality i ,
 US_i : US-liberated, $Distance_i$: distance to US-Soviet demarcation line

RD results

	<i>Sudetenland</i>			Czech main lands		
	Para-metr. RD	Para-metr. RD	Local-lin. RD	Para-metr. RD	Para-metr. RD	Local-lin. RD
	(1)	(2)	(3)	(4)	(5)	(6)
US zone 1945	0.094*** (0.026)	0.094*** (0.022)	0.079*** (0.026)	0.002 (0.013)	0.002 (0.013)	0.004 (0.017)
Geography controls	No	Yes	No	Yes	Yes	No
Population controls	No	Yes	No	Yes	Yes	No
Mean dep. var.	0.107	0.108	0.107	0.107	0.107	0.105
RD bandwidth	25.00	25.00	17.74	25.00	25.00	13.35
Eff. obs.	186	185	125	572	572	313
R ²	0.798	0.832	–	0.800	0.814	–

Notes: The table shows the effect for US liberated regions (RD estimates) at the demarcation line between US- and Soviet-liberated regions in 1945 Czechoslovakia based on a parametric (quadratic-interacted) polynomial approach without/with control variables (columns (1), (2), (4), and (5), bandwidth: 25 km) and a local-linear RD specification including a data-driven optimal bandwidth choice (Calonico *et al.*, 2017). The units of observation are municipalities, the dependent variable is the vote share of the Communist party (KSČM) in the 2017 Czech national elections. Columns (1) to (3) show estimates for regions originally settled by ethnic Germans (*Sudetenland*), columns (4) to (6) refer to the Czech main lands. We exclude municipalities south of Žernovice where ethnicity divides corresponded with the demarcation line. Geography controls are the distance to the external (German) border, distance to the nearest main road, distance to the nearest railway line, mean altitude and slope (difference between maximum and minimum altitude). Population controls are logged population in 1930 and logged present-day population. Significance levels (Conley (2010) standard errors/robust RD standard errors): *** 0.01, ** 0.05, * 0.1.

Geocoded LITS survey

	<i>Sudetenland</i>	Czech main lands
	(1)	(2)
<i>Were you or any member of your family a member of the Communist Party prior to 1989?</i>		
Respondent, parents or other family member	0.690** (0.288)	-0.045 (0.098)
<i>Economic values</i>		
Gap between rich and poor should be reduced	1.712** (0.694)	-0.020 (0.193)
<i>Preferred economic system</i>		
Market economy	-0.958*** (0.277)	-0.015 (0.101)
Sometimes planned economies	0.870*** (0.330)	0.013 (0.074)
Does not matter	0.251 (0.326)	0.015 (0.097)
<i>Preferred government system</i>		
Democracy	-0.728** (0.284)	-0.002 (0.097)
Sometimes authoritarianism	0.479 (0.309)	0.137* (0.078)
Does not matter	0.265 (0.271)	-0.148 (0.092)
Geography controls	Yes	Yes
Sociodemographic controls	Yes	Yes
Year fixed effects	Yes	Yes
Bandwidth	25.000	25.000
Max. obs.	126	197

Notes: The table shows the marginal effects for US liberated regions from Probit specifications estimated at the demarcation line between US- and Soviet-liberated regions in 1945 Czechoslovakia (Exception: Gap between rich and poor should be reduced: ordered Probit, table shows the estimated coefficient). The units of observation are individual respondents in the Life in Transition Survey, the dependent variables are answers to survey questions. We pool survey II (2010) and III (2016) and include year fixed effects. Geography controls are longitude and latitude of the respondent. Socio-demographic controls are age and gender. We impose a 25 km bandwidth around the demarcation line. Column (1) shows estimates for regions originally settled by ethnic Germans (*Sudetenland*), column (2) refers to the Czech main lands. We exclude residents from municipalities south of Žernovice, where ethnic divides corresponded with the demarcation line. Significance levels (robust standard errors): *** 0.01, ** 0.05, * 0.1.

Robustness

- Communist party cells ✓ Party cells
- Regional subsamples ✓ Regional subsamples
- 1996-2017 Czech elections ✓ All elections
- No effects at pseudo demarcation lines ✓ Pseudo analyses
- No effects for social democrats ✓ Social democrats

Mechanisms

- Anti-fascist Germans ✓ 1946 election Communist elites in 1959
- Ethnic German legacy ✗ German ethnicity continuous
- Resettlement and origin of Czechs ✗ Czech ethnicity continuous
- Changes in industrial shares ✗ Industrial shares 1950
- Memories to Allied forces ✗ War memorials
- Violence during/after WWII ✗ Memories to WWII
- Trust in institutions/people ✗ Trust
- Intra-Czech migration ✗ Mobility

Conclusion (AJPS 2023)

- Exogenous variation in ethnic cleansing (staying/leaving anti-fascist Germans in Czech *Sudetenland*)
- Anti-fascist Germans transferred their values across generations and regimes, their descendants still lean far-left in today's free society
- An ethnic minority can affect local political equilibria, as they may supplant ethnic identity by a pronounced political identity

P.S.: Kafemlejnek (2026)

Who Reacts to Bibliometric Research Funding Incentives?

Taras Hrendash, Štěpán Jurajda

Motivation

Multiple manifestos warn against behavioral consequences of bibliometric funding of science as opposed to peer review (CoARA, Leiden, DORA). Yet, there remains a paucity of well-identified causal evidence on the effects of bibliometric funding on scientists' behavior.

The 2009 Czech reform used bibliometric formulas to determine research funding of universities, while researchers at the Czech Academy of Sciences continued to be subject to peer review. Pre-existing (stable) affiliations thus serve as a natural experiment, where similar scientists in the same aggregate environment and field face different incentives.

Empirical approach and findings

Doubly robust IPW difference-in-differences ATU, based on all publications by all Czech scientists during 2005-2022. Findings robust to potentially selective post-reform affiliation changes (using geo-distances).

The use of bibliometric funding led scientists to trade off 20% more articles (relative to pre-reform base) in low-quality journals for 20% fewer in high-quality ones. These incentive effects affect all disciplines and even scientists with highest-quality output before the reform.

To explore:

- Salami publishing
- Turning it off
- Gender and workplace environment

ACEMOGLU, D., T. A. HASSAN, AND J. A. ROBINSON (2011): “Social Structure and Development: A Legacy of the Holocaust in Russia,” *The Quarterly Journal of Economics*, 126, 895–946.

AKBULUT-YUKSEL, M. AND M. YUKSEL (2015): “The Long-Term Direct and External Effects of Jewish Expulsions in Nazi Germany,” *American Economic Journal: Economic Policy*, 7, 58–85.

ARBATLI, C. E. AND D. GOMTSYAN (2019): “Voting Retrospectively: Critical Junctures and Party Identification,” *European Economic Review*, 119, 356–390.

BAUER, T. K., S. BRAUN, AND M. KVASNICKA (2013): “The Economic Integration of Forced Migrants: Evidence for Post-War Germany,” *The Economic Journal*, 123, 998–1024.

BECKER, S. O. AND A. FERRARA (2019): “Consequences of Forced Migration: A Survey of Recent Findings,” *Labour Economics*, 59, 1–16.

BECKER, S. O., I. GROSFELD, P. GROSJEAN, N. VOIGTLÄNDER, AND E. ZHURAVSKAYA (2020): “Forced Migration and Human Capital: Evidence from Post-WWII Population Transfers,” *American Economic Review*, 110, 1430–1463.

- CANTONI, D., F. HAGEMEISTER, AND M. WESTCOTT (2020): "Persistence and activation of right-wing political ideology," Working paper, University of Munich, Munich.
- CHARNYSH, V. (2019): "Diversity, Institutions, and Economic Outcomes: Post-WWII Displacement in Poland," *American Political Science Review*, 113, 423–441.
- DEHDARI, S. AND K. GEHRING (2018): "The Origins of Common Identity: Evidence from Alsace-Lorraine," CESifo Working Paper Series 7410, CESifo Group Munich.
- FONTANA, N., T. NANNICINI, AND G. TABELLINI (2017): "Historical Roots of Political Extremism: The Effects of Nazi occupation of Italy," CESifo Working Paper Series 6838, CESifo, Munich.
- FOUKA, V. (2019): "How Do Immigrants Respond to Discrimination? The Case of Germans in the US During World War I," *American Political Science Review*, 113, 405–422.
- FOUKA, V., S. MAZUMDER, AND M. TABELLINI (2021): "From Immigrants to Americans: Race and Assimilation during the Great Migration," *Review of Economic Studies*, forthcoming.

GENNAIOLI, N. AND G. TABELLINI (2019): “Identity, Beliefs, and Political Conflict,” Tech. rep.

GROSFELD, I. AND E. ZHURAVSKAYA (2015): “Cultural vs. Economic Legacies of Empires: Evidence from the Partition of Poland,” *Journal of Comparative Economics*, 43, 55–75.

GUZI, M., Š. MIKULA, AND P. HUBER (2019): “Old Sins Cast Long Shadows : The Long- Term Impact of the Resettlement of the Sudetenland on Residential Migration,” .

HUBER, K., V. LINDENTHAL, AND F. WALDINGER (2020): “Discrimination, Managers, and Firm Performance: Evidence from “Aryanizations” in Nazi Germany,” *Journal of Political Economy*, forthcoming.

NUNN, N. (2008): “The Long-term Effects of Africa’s Slave Trades,” *The Quarterly Journal of Economics*, 123, 139–176.

NUNN, N. AND L. WANTCHEKON (2011): “The Slave Trade and the Origins of Mistrust in Africa,” *American Economic Review*, 101, 3221–52.

OCHSNER, C. AND F. ROESEL (2020): “Migrating Extremists,” *The Economic Journal*, 130, 1135–1172.

TESTA, P. (2020): “The Economic Legacy of Expulsion: Lessons from Postwar Czechoslovakia,” *SSRN Electronic Journal*.

VOIGTLÄNDER, N. AND H.-J. VOTH (2012): “Persecution Perpetuated: The Medieval Origins of Anti-Semitic Violence in Nazi Germany,” *The Quarterly Journal of Economics*, 127, 1339–1392.

WALDINGER, F. (2010): “Quality Matters: The Expulsion of Professors and the Consequences for PhD Student Outcomes in Nazi Germany,” *Journal of Political Economy*, 118, 787–831.

——— (2012): “Peer Effects in Science: Evidence from the Dismissal of Scientists in Nazi Germany,” *The Review of Economic Studies*, 79, 838–861.